



## EBCI TRIBAL OPTION

For Providers



April 2026 Provider Newsletter

### What is the EBCI Tribal Option?

EBCI Tribal Option assists approximately 5,700 Tribal-eligible Medicaid beneficiaries, primarily in Cherokee, Haywood, Swain, Jackson, and Graham counties.

[Learn More](#)



CHEROKEE INDIAN  
HOSPITAL AUTHORITY

# ENRICHMENT CENTER PROJECT UPDATES

The IDD/Enrichment Center Project represents a significant and forward-looking investment in the health, independence, and quality of life for members of the Eastern Band of Cherokee Indians. It is designed to address long-standing gaps in services, including limited access to care, long wait times, lack of residential options, and insufficient day programming and support systems.

At its core, the project is about building a tribally driven system of care—one that reflects the values, culture, and unique needs of the community. This includes developing infrastructure, workforce capacity, and partnerships to ensure services are not only available, but sustainable and culturally appropriate.

The work includes building tribal infrastructure for an IDD/Autism program, creating a family resource center, improving access to assessments and supports, expanding meaningful day and residential options, and developing a strong tribal workforce to help manage and sustain these services.

**EBCI TRIBAL OPTION WILL BE PROVIDING MONTHLY PROJECT UPDATES  
TO OUR PROVIDER NETWORK.**

CLICK HERE FOR ADDITIONAL PROJECT  
UPDATES AND INFORMATION



2025 Annual Report

**We are pleased to share the 2025 North Carolina Providers Council Annual Report—a dynamic look at a year marked by growth, collaboration, and meaningful impact across North Carolina’s healthcare system.**

The report highlights:

- Statewide engagement with NC Medicaid program partners and stakeholders
- Legislative and policy achievements that advanced member priorities
- A growing membership representing diverse professional disciplines and regions
- The breadth of services that our members deliver statewide, including I/DD, Behavioral Health, Substance Use Disorder, and Child & Family Welfare supports
- Our 2025 annual conference, which showcased innovation and best practices
- Operations and management elements of the association’s work

We remain dedicated to advancing this work together and strengthening the systems that North Carolinians rely on.

[\*\*Read the 2025 Annual Report Now\*\*](#)

**Collaborate. Influence. Lead with NCPC.**

**If you are a provider agency** of IDD/MH/SUD or Child and Family Welfare services, you can apply for a Provider Membership [here!](#)

**If you are a vendor** offering services or products to IDD/MH/SUD or Child and Family Welfare service providers, or a health plan, you can apply for a Provider Support Membership [here!](#)

**If you are a Licensed Independent Practitioner** provider of IDD/MH/SUD or Child and Family Welfare services, you can apply for an Associate Membership [here!](#)



## North Carolina Child Welfare Trauma-Informed Assessment (NC CWTIA) Request for Applications (RFA)

Issued by: North Carolina Health and Human Services, Division of Social Services

Release Date: January 15, 2026

Application Due Date: March 15, 2026, 11:59 p.m.

Notification of Selection: April 6-10, 2026

Point of Contact: Kristin Reed at [kreed@benchmarksnc.org](mailto:kreed@benchmarksnc.org)

### 1. Purpose and Background

North Carolina Department of Health and Human Services Division of Social Services (NCDHHS DSS) in coordination with North Carolina Medicaid Health Plans is seeking provider agencies to participate in the implementation of the North Carolina Child Welfare Trauma-Informed Assessment (NC CWTIA)—a standardized, trauma-informed clinical assessment process for children and youth involved with county Departments of Social Services (DSS).

The purpose of the assessment is to support children who are entering, or at risk of entry into, the foster care system and who may have experiences or needs that place them at higher risk for requiring behavioral health and other clinical or non-clinical interventions. The assessment is intended to help identify and understand these needs to inform appropriate support and services in coordination with the Division and other agencies. Selected providers will engage in training, ongoing clinical coaching, and fidelity monitoring to ensure high-quality, consistent assessments for the eligible population statewide.

### 2. Legislative and Funding Reference

This initiative is mandated by [Section 9J.12 of Session Law 2023-134](#) and aims to identify mental health, behavioral health, intellectual, and developmental disability needs resulting from trauma exposure. This service shall be covered under the [NC Medicaid Clinical Coverage Policy 8C-7.3.3](#). Additional guidance regarding this service will be issued by the Division of Health Benefits (DHB) and published in a provider bulletin.

### 3. Program Overview

The NC CWTIA is an in-depth evaluation conducted by licensed, trauma-informed clinicians. It is designed to help care teams, including DSS child welfare workers, mental health professionals, caregivers, and other youth-involved providers and professionals understand how a child's experiences, including exposure to trauma, impact their functioning, diagnosis, and service needs.

Program Goals:

- Promote early, accurate diagnosis and timely connection to appropriate services.
- Reduce reliance on crisis and residential placements.
- Strengthen collaboration among DSS, health plans, and provider networks.
- Build sustainable trauma-informed clinical capacity statewide.

[Click Here To View NC-CWTIA Request For Applications](#)

# Alcohol Awareness Month

*April 2026*

According to recent studies, alcohol-related issues, such as binge drinking and alcohol use, are more prevalent among American Indian and Alaska Native youth and adults than the general population.

## Alcohol-free ideas:

- Storytelling/reading
- Arts and crafts
- Learning to cook traditional foods
- Go for a run/walk
- Hit the gym



Don't be  
**AFRAID**  
to SAY no

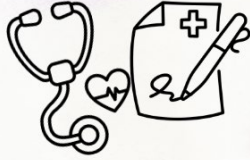


**Support those in need-** If you know someone struggling with alcohol misuse, encourage them to seek help and provide them with resources. Recovery is possible, and culturally relevant support is available.



**EBCI TRIBAL OPTION**

## Acronym of the Month



**PCP**

**PRIMARY CARE  
PROVIDER**

## Cherokee Language

**JUICE**  
**U DA NE NV**

ᄆᄃᄅᄆ

### Questions - Contact Live Help Desk

Submit questions to the Help Desk via email at [openpayments@cms.hhs.gov](mailto:openpayments@cms.hhs.gov) or by calling 1-855-326-8366 (TTY Line: 1-844-649-2766), Monday through Friday, from 9:00 a.m. to 5:00 p.m. (ET), excluding Federal holidays.

The Help Desk refers media inquiries to CMS' Press Office for response.

Visit the [Resources](#) page on the Open Payments website for many of the above resources.

*Eat well. Play well.  
Stay well.*



**EBCI TRIBAL OPTION**





241 Cherokee Hospital Loop

Cherokee, NC 28719

MEMBER/PROVIDER: 800.260.9992

[Connect With Us](#)

